

PRODUCT INFORMATION

# Crosby Collection

KATE HUME - VONDER

STANDARD SIZES & BESPOKE



EXPERT MANUFACTURER OF FURNITURE

### CROSBY STANDARD COLLECTION

PAG. 3 CROSBY LIBRARY

PAG. 4 WARDROBE EAST SIDE - LADIES

PAG. 5 WARDROBE WEST SIDE - GENTLEMEN

PAG. 6 CROSBY MIRROR

### CROSBY BESPOKE

PAG. 7 CROSBY LIBRARY

PAG. 8 CROSBY KITCHEN WITH PANTRY

PAG.10 WARDROBE EAST SIDE - LADIES

PAG.11 WARDROBE WEST SIDE - GENTLEMEN

PAG.12 CROSBY WALL UNIT WITH FIREPLACE

PAG.13 BATHROOM FURNITURE AND DRESSER

PAG.14 CROSBY DOORS & FRAMES

PAG.15 FINISHES

VONDER is first and foremost an expert manufacturer of furniture and produces its collections in the Netherlands. Vonder combines traditional craftsmanship with an extensive knowledge of techniques and finishes. This results in bespoke interiors that exude tranquillity and a timeless beauty, forming a natural fit with their occupants, architecture and surroundings.

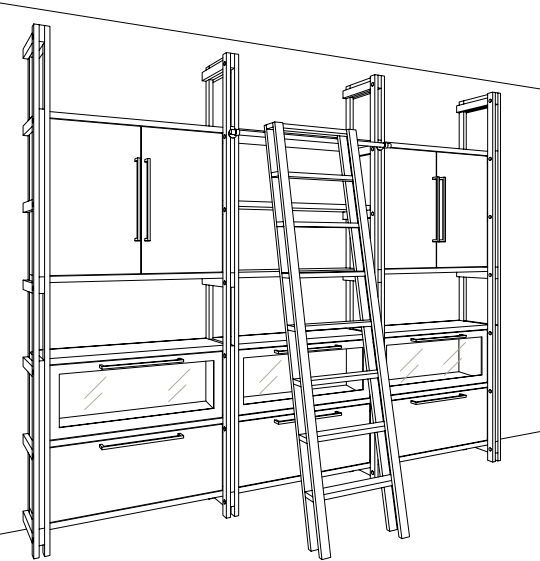
ARCHITECT Kate Hume is a renowned interior designer with an international client base. Her interiors epitomise restrained luxury, with her choice of colours and eclectic style combining to create a warm and welcoming home.

THE CROSBY COLLECTION encapsulates the joy of coming home to a place of unassuming luxury where the memories are your own. It sums up Kate Hume's view of modern living which echoes to the past yet will endure through future generations.

The collection comprises a kitchen with pantry, wardrobes, library, panelling and doors, all of which are characterised by the simplicity and elegance of their design, detailing and carefully selected materials. The finest types of wood, marble worktops and leather and bronze-finished coverings are all handled and shaped with skilful precision.

STANDARD SIZES AND BESPOKE The entire Crosby Collection is made to measure and installed in the interior, including all fixtures and fittings. The knowledge and experience gained over the years has enabled a standard collection to be derived from this, within which there is a choice of dimensions and arrangements. Vonder's expertise in the development of special wood joints, finishes and unique detailing gives designers the freedom to incorporate new details in each specific project.



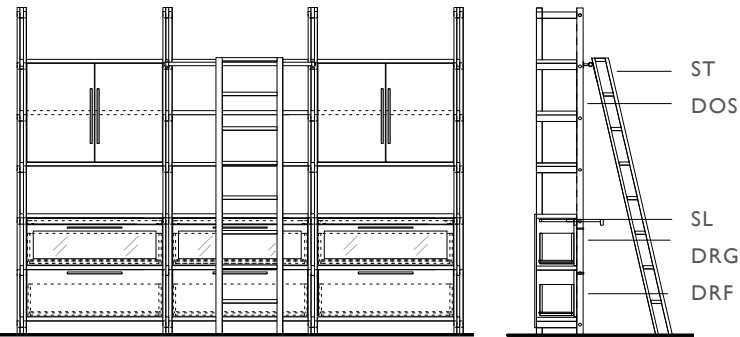
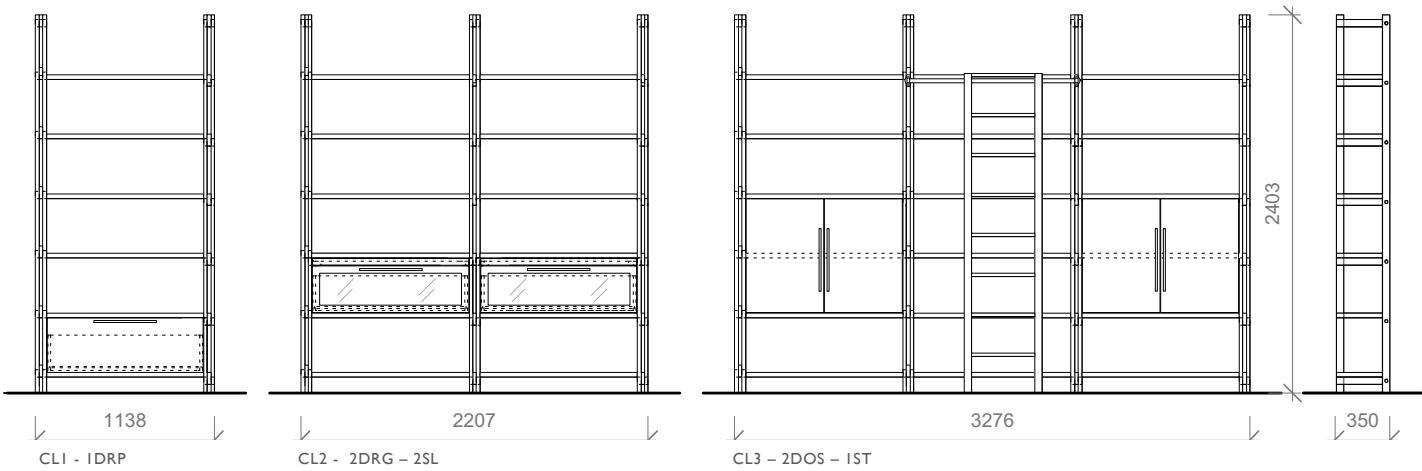


BASIC ELEMENTS

- available in 1, 2 or 3 segments
- arrangement as desired, see options
- incl. luxury handles white bronze
- oak, stained and lacquered  
in standard finishes, see p. 15

W 1138 - 2207 - 327 mm  
H 2403 mm  
D 350 mm  
Stiles and supports 69 mm wide

EXAMPLES OF DIMENSIONS AND ARRANGEMENTS



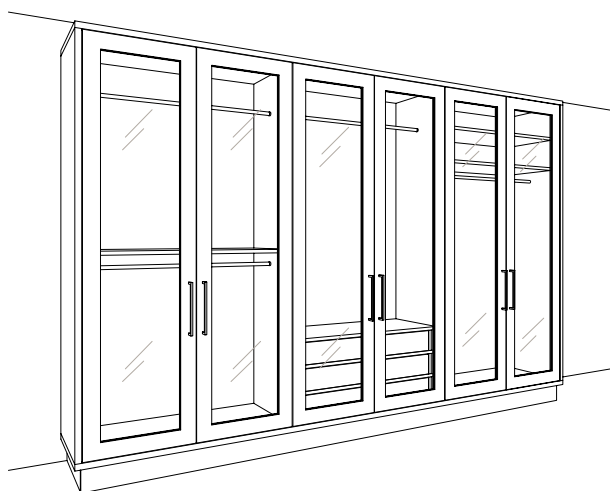
CL3 - 3DRF - 3DRG - 3SL - 2DOS - 1ST

OPTIONS

- DRF drawer flat \*
- DRG drawer glass \*
- SL sliding shelf - push to open
- DOS door short \*
- ST stepladder incl. stainless steel rail

\* position as desired





## BASIC ELEMENTS

- available in 1, 2 or 3 segments
- arrangement as desired, see options
- choice of panelled or glass doors
- incl. luxury handle white bronze
- choice of corpus:
  - melamine white or melamine black, or
  - oak in standard finishes
- choice of front:
  - semi gloss or high gloss polished

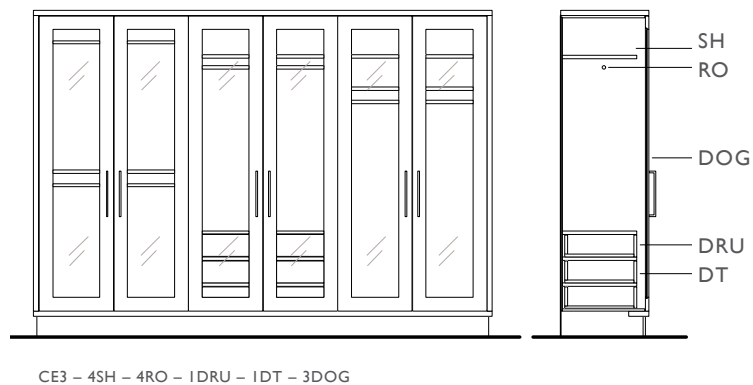
W 1176 - 2273 - 3370 mm

H 2400 mm

D 650 mm

Plinth height 150 mm.

## EXAMPLES OF DIMENSIONS AND ARRANGEMENTS

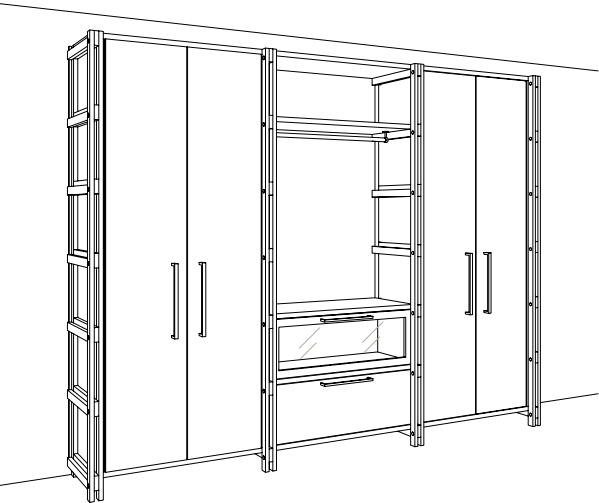


## OPTIONS

- SH shelves \*
- DRU drawer unit - push to open \*
- DOP door panelled \*
- DOG door glass \*
- DT drawer tray with small sliding tray on top
- RO rod \*
- SR shoe rack - on shelf
- MI mirror inside door

\* position as desired



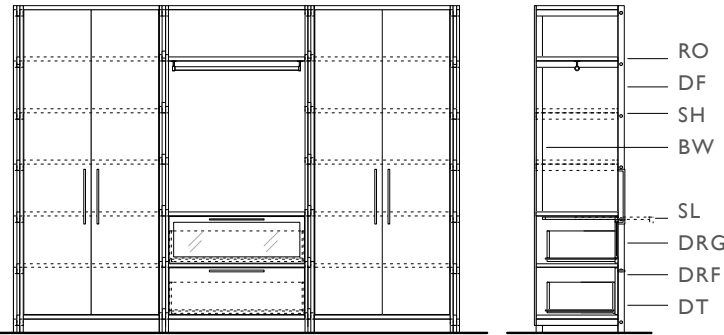
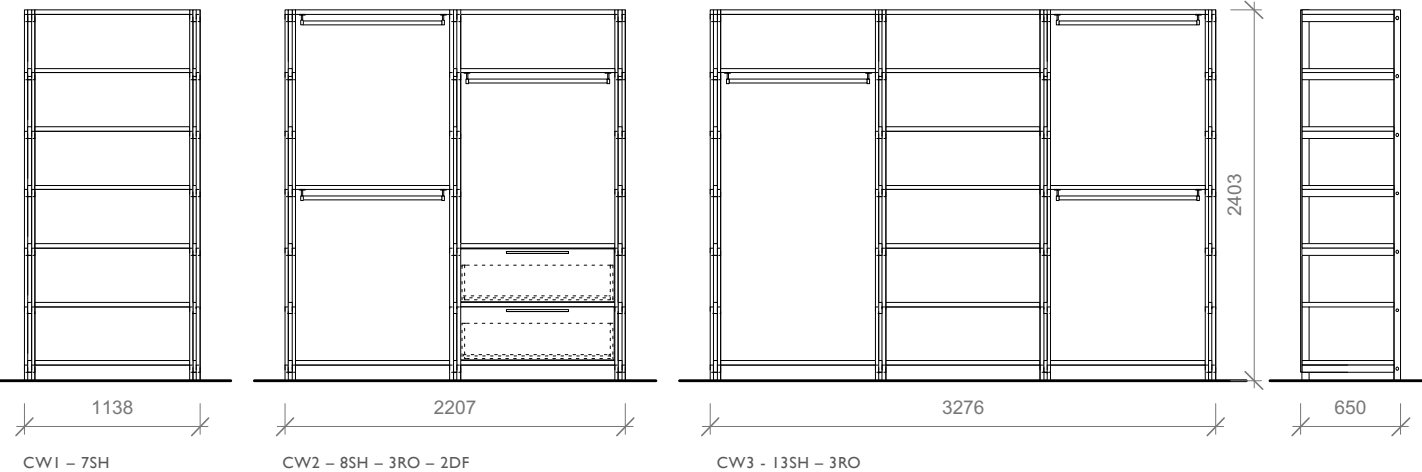


BASIC ELEMENTS

- available in 1, 2 or 3 segments, with back wall
- arrangement as desired, see options
- oak, stained and lacquered,  
in standard finishes, see p. 15

W 1138 - 2207 - 3276 mm  
H 2403 mm  
D 650 mm  
Stiles and supports 69 mm wide.

EXAMPLES OF DIMENSIONS AND ARRANGEMENTS

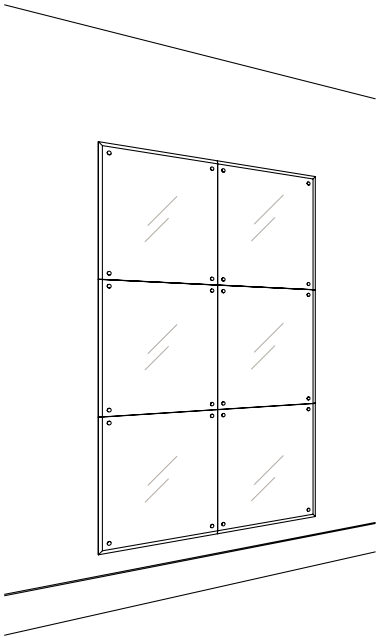


OPTIONS

- SH shelves \*
- DRF drawer flat \*
- DRG drawer glass \*
- SL sliding shelf - push to open
- DOF door flat \*
- DT drawer tray with small sliding tray on top
- RO rod \*
- SR shoe rack - in drawer or on shelf
- MI mirror inside door

\* position as desired



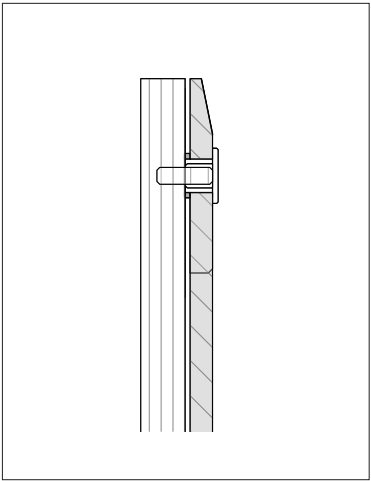
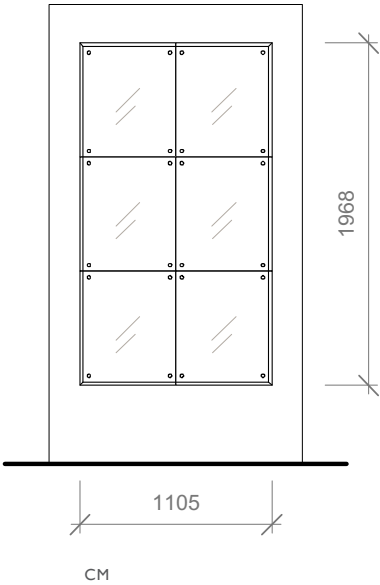


BASIC ELEMENTS

- glass panels, facet-cut exterior all the way round
- brass or nickel fitting at the corners of the glass panels

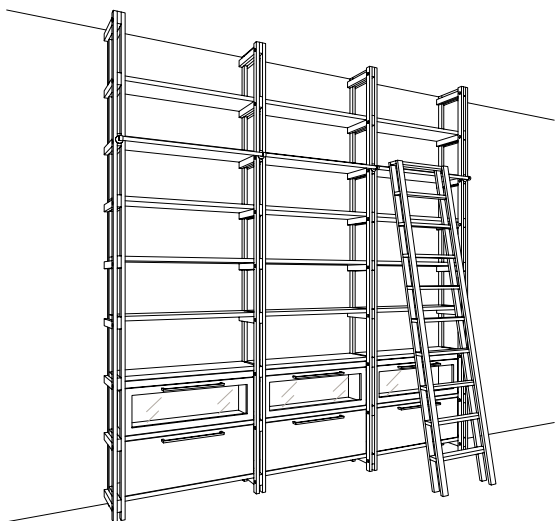
W	1100	mm
H	1968	mm
D	20	mm

EXAMPLE OF DIMENSION AND ARRANGEMENT



DETAIL CONSTRUCTION





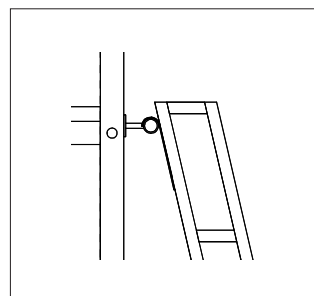
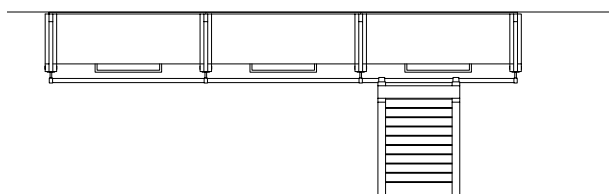
The library has a unique design and is easy to customise, from books or ornaments in the open sections to storage behind the doors.

#### BASIC ELEMENTS

- with or without back wall
- open, flat or glass doors
- drawers with wood or glass fronts
- choice of various types of wood, brushed, stained and lacquered, in any finish, see p. 15

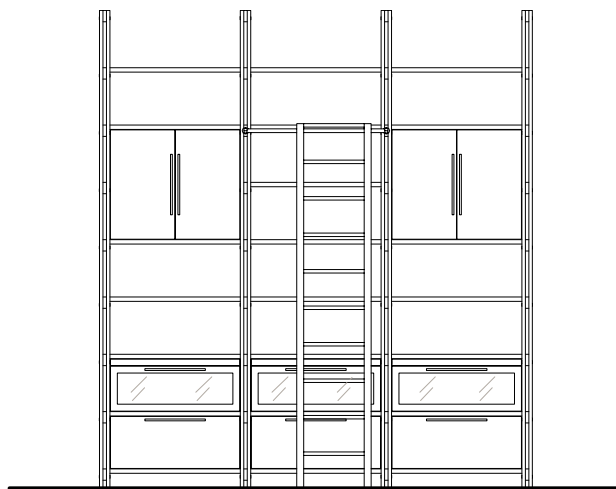
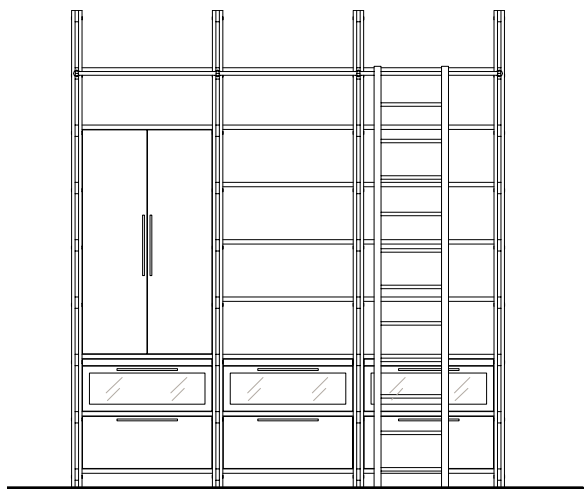
#### OPTIONS

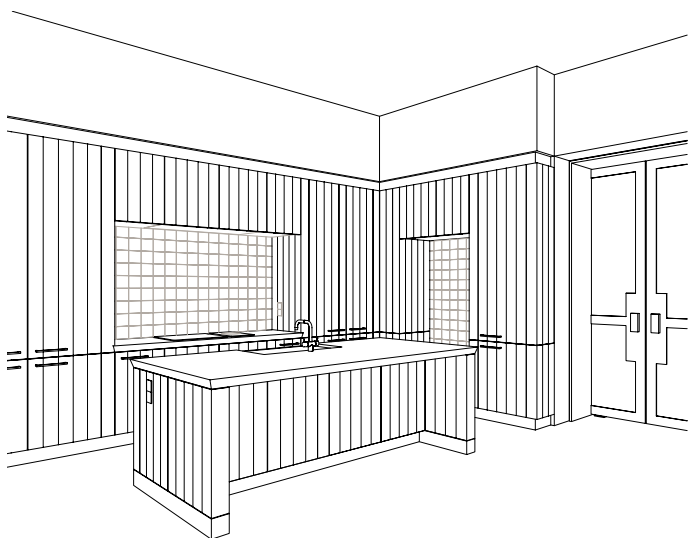
- drawer shelf above the drawers
- drawers lined with luxury leather
- rod and stepladder



DETAIL STEPLADDER

#### EXAMPLES OF ARRANGEMENT





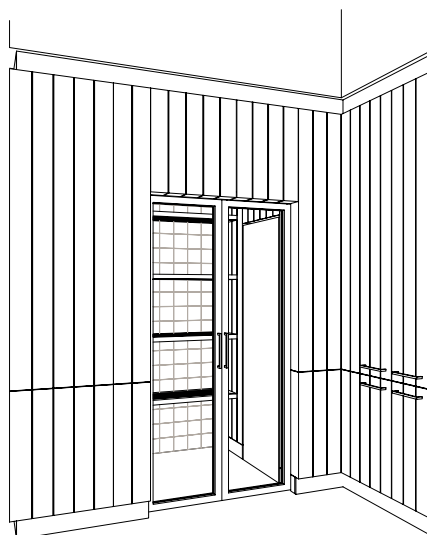
The kitchen has a familiar and yet contemporary ambiance. Luxurious materials combined with simplicity of design. The feeling of coming home.

#### BASIC ELEMENTS

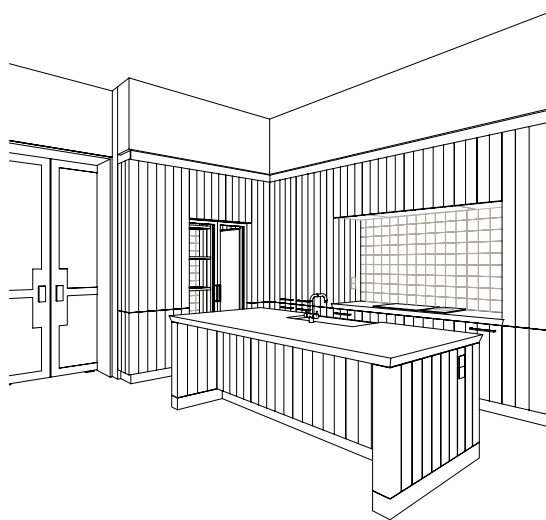
- doors, drawers and panelling with planks
- luxury handles
- choice of various types of wood, stained and lacquered, in any finish, see p. 15

#### OPTIONS

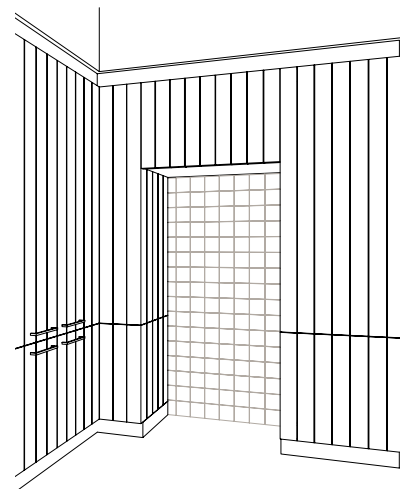
- drawers with compartment tray for cutlery and utensils
- drawers lined with luxury leather
- undermount sink
- sloping worktop edge
- luxurious pantry with robust shelves



PANTRY

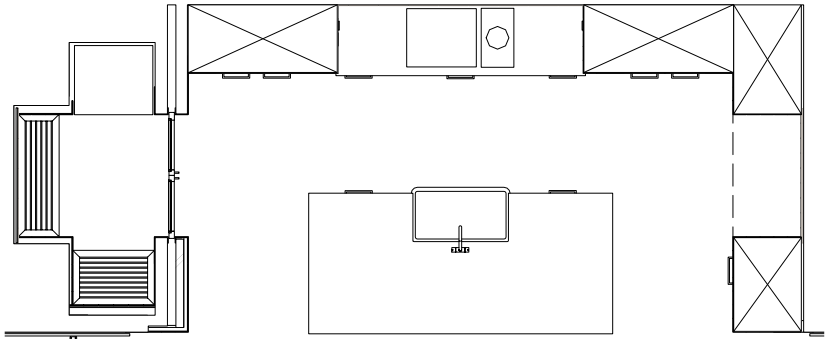


KITCHEN

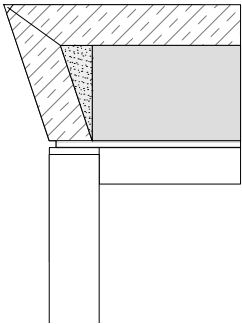
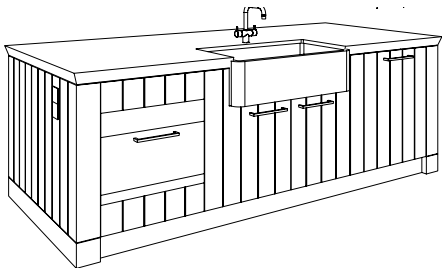
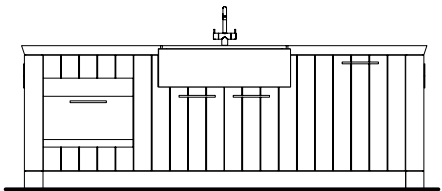
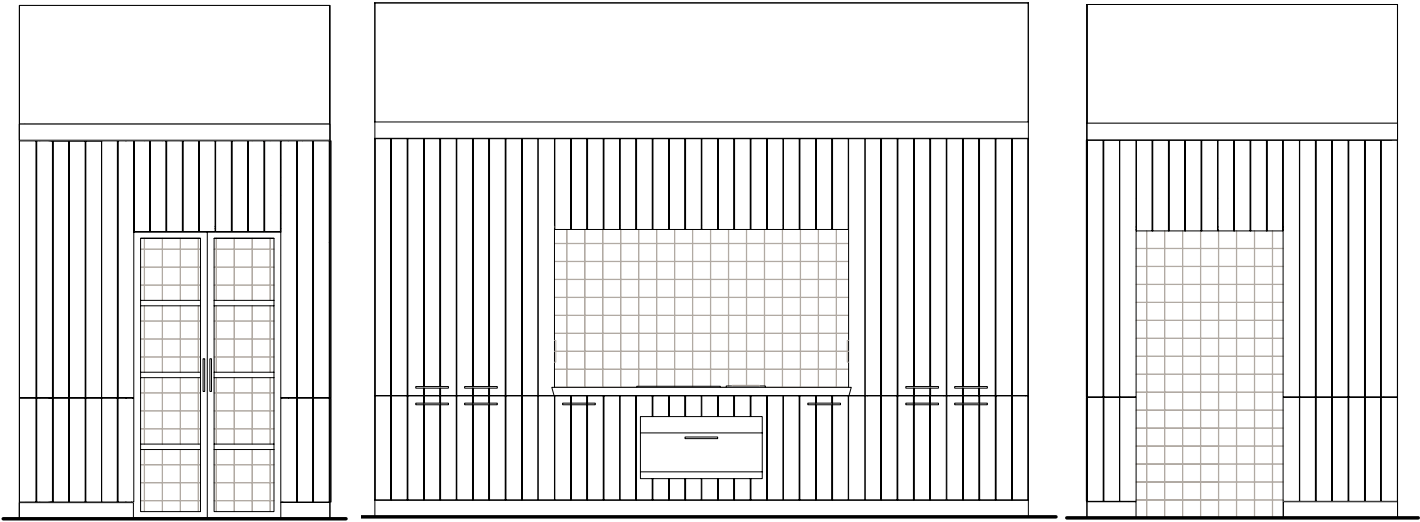


NICHE



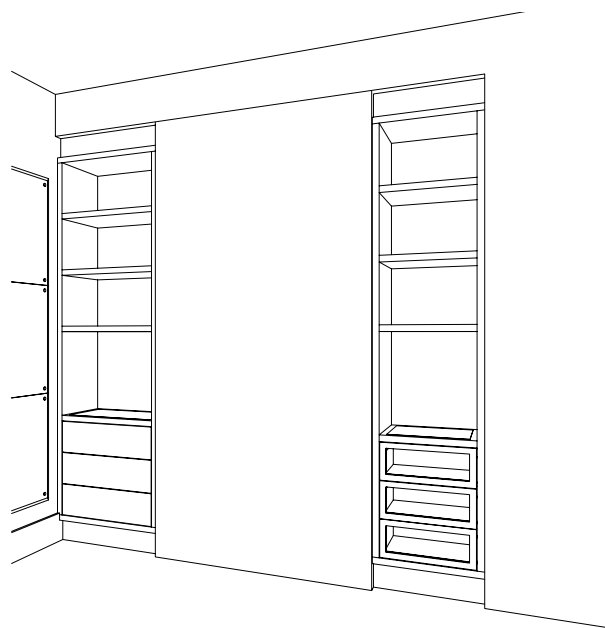
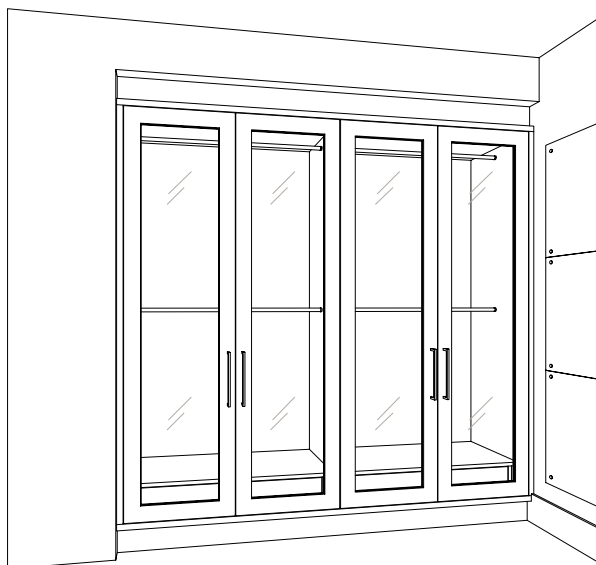


EXAMPLE OF ARRANGEMENT

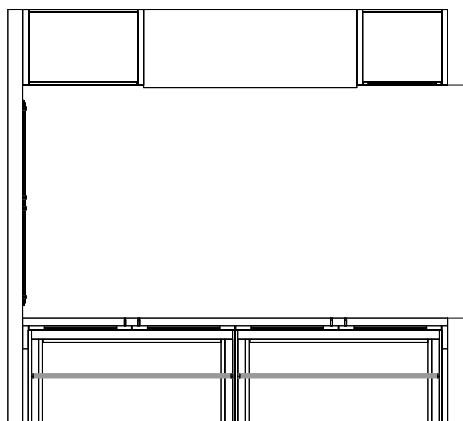
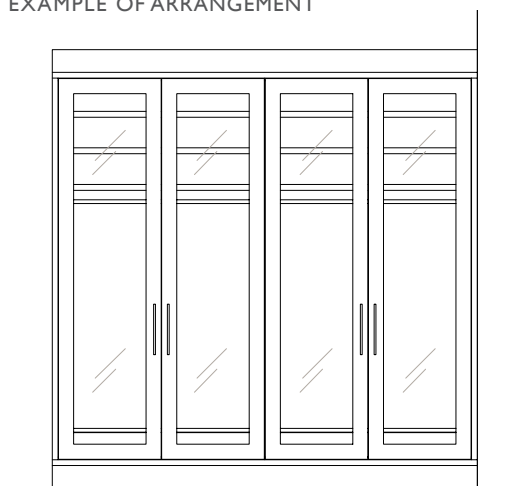


DETAIL SLOPING WORKTOP EDGE





## EXAMPLE OF ARRANGEMENT



The bespoke East Side wardrobe offers feminine elegance. Fabric covers the rear of the glass panel doors. Drawers and shelves are lined with soft, luxury leather.

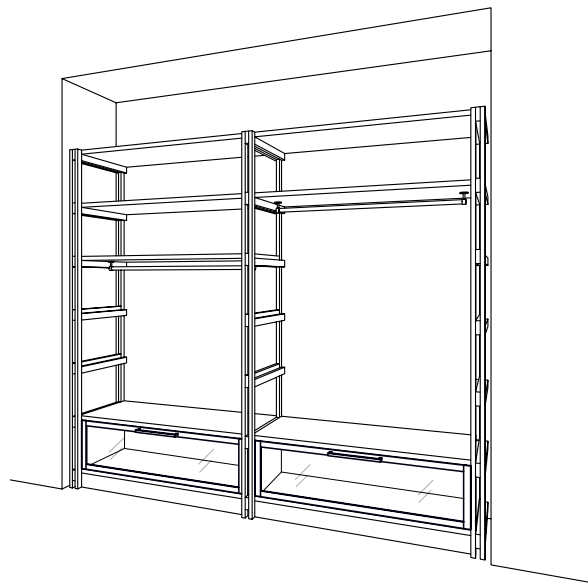
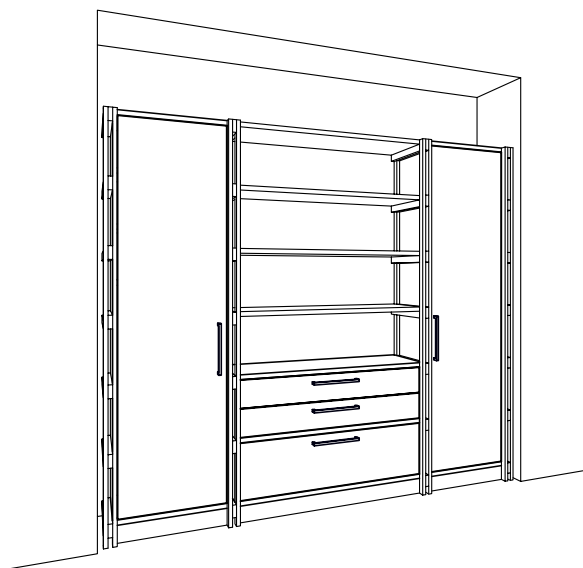
## BASIC ELEMENTS

- choice of panelled or glass doors
- arrangement: hanging section, shelves and drawers as desired
- drawers
  - with touch system
  - with wood or glass fronts
  - including compartment tray and shoe storage
- choice of corpus: in melamine or various types of wood, in any finish, see p. 15
- choice of front, semi gloss or high gloss lacquered, or various types of wood, in any finish, see p. 15

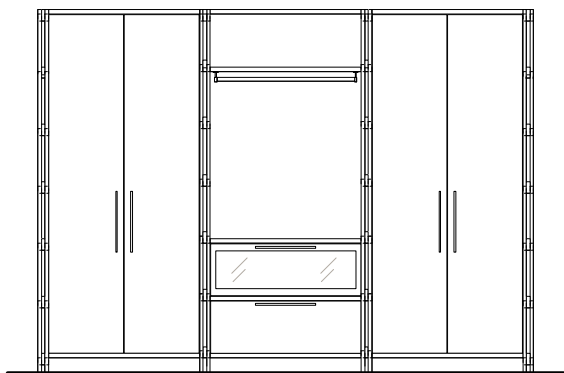
## OPTIONS

- drawers and shelves lined with luxury leather
- bevelled glass mirror, see p. 6





## EXAMPLE OF ARRANGEMENT



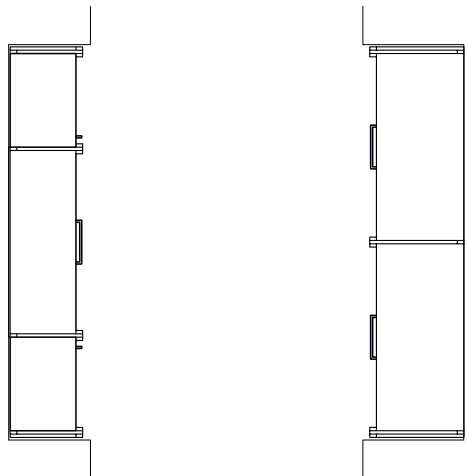
The bespoke West Side wardrobe has a spacious, open and manly design, making it elegant and unique.

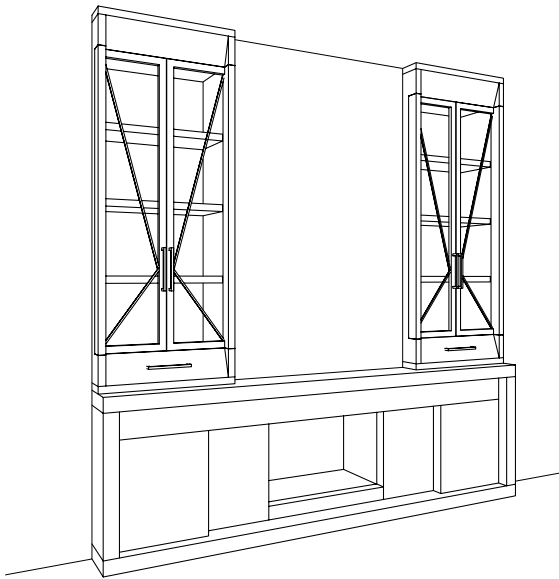
## BASIC ELEMENTS

- open, glass and/or flat doors
- hanging section, shelves and drawers as desired
- drawers in various dimensions
  - including compartment tray and shoe storage
  - with wood or glass fronts
- various types of wood, stained and lacquered, in any finish, see p. 15

## OPTIONS

- drawer shelf above the drawers
- drawers and shelves lined with luxury leather



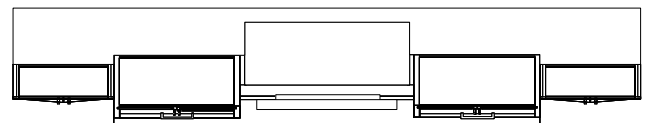
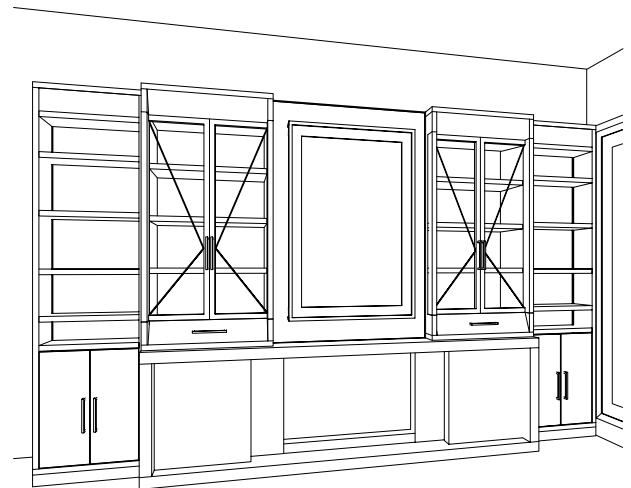
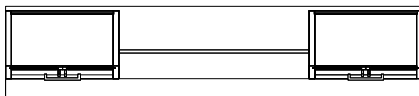
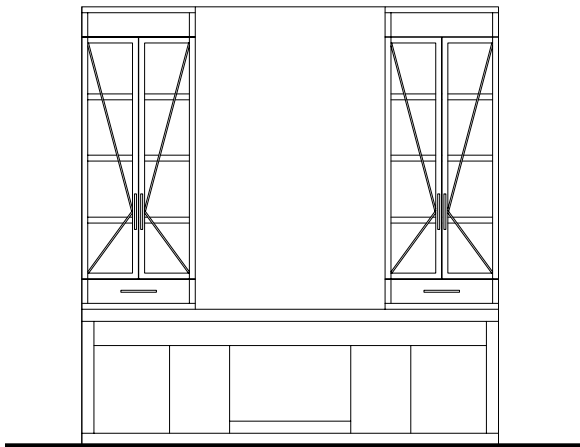


Stylish bespoke built-in cabinets on both sides of the fireplace. The cabinets taper outwards and have leadlight doors.

#### BASIC ELEMENTS

- leadlight doors
- luxury handles
- side lighting
- choice of various types of wood, stained and lacquered, in any finish, see p. 15

#### EXAMPLES OF ARRANGEMENTS

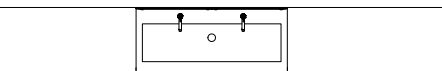
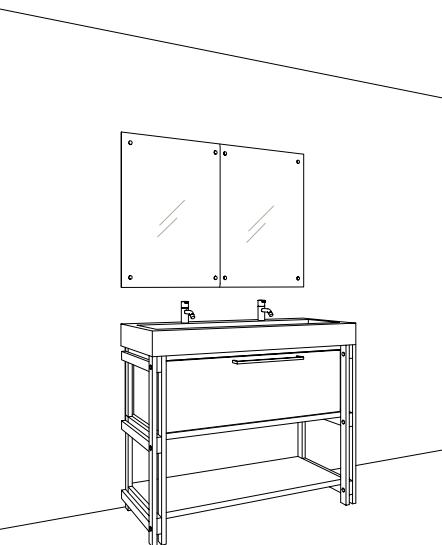
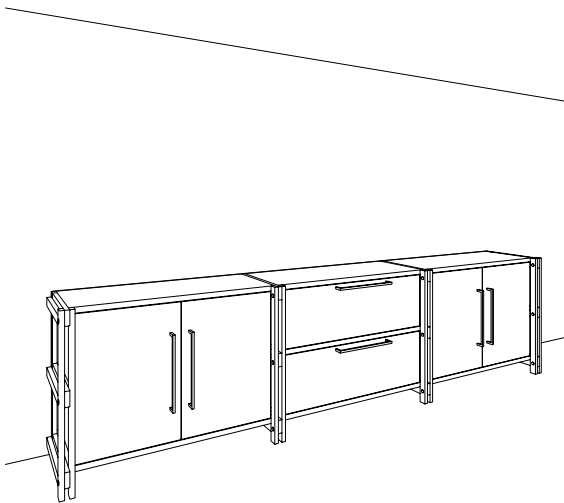


Within the bespoke Crosby Collection other items can be designed as desired, such as the dresser and the bathroom collection.

## CROSBY DRESSER

### BASIC ELEMENTS

- as Crosby library
- choice of doors and drawers, with wood and/or glass
- various types of wood, brushed, stained and lacquered, in any finish, see p. 15

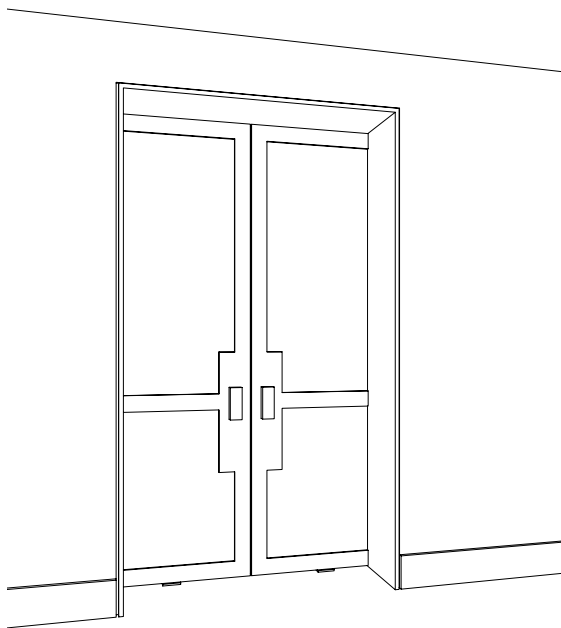


## CROSBY BATHROOM FURNITURE

### BASIC ELEMENTS

- as West Side wardrobe
- freedom to choose basin and taps
- various types of wood, brushed, stained and lacquered, in any finish, see p. 15

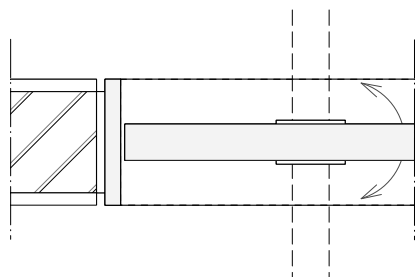




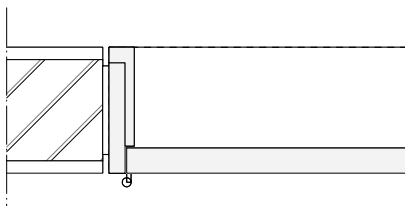
The Crosby doors have a luxury finish with a sunken horizontal panel of wood or glass, elegant door frames with a recessed wall frame and concealed hinges.

#### BASIC ELEMENTS

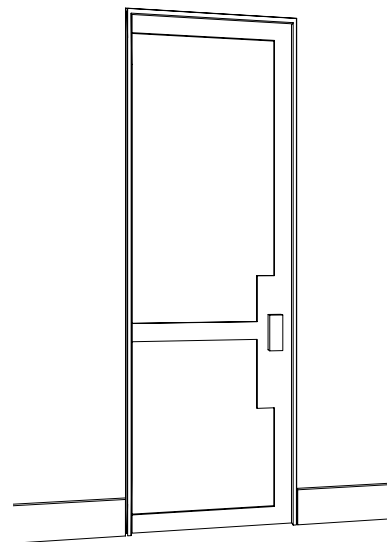
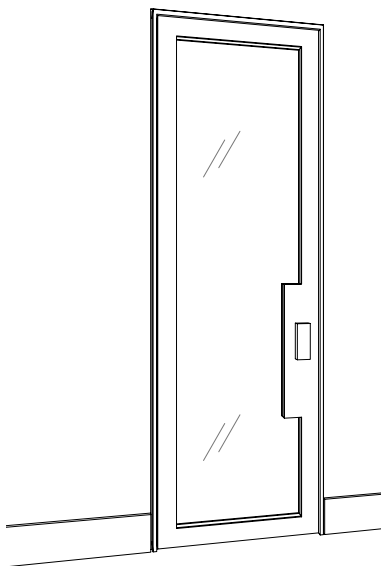
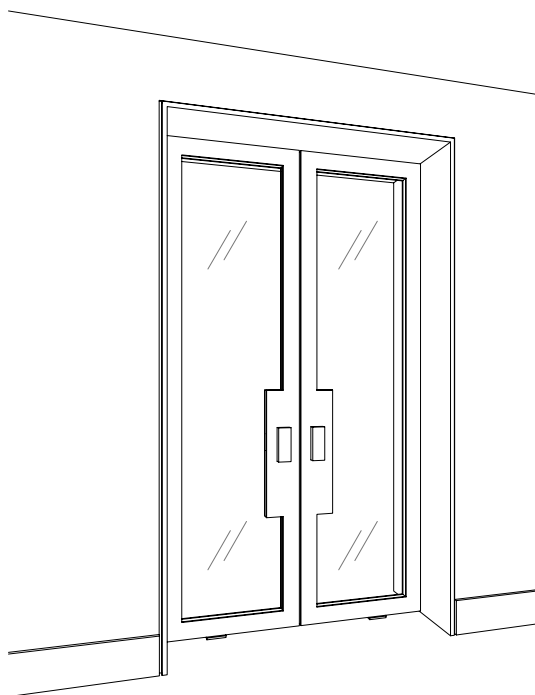
- as swing door, pivot door or sliding door
- in 1 or 2 panels, with wood or glass
- pivot door fitting with 90-degree fixed position
- choice of standard hinge or concealed hinge
- various types of wood, brushed, stained and lacquered, in any finish, see p. 15
- luxury handles



DETAIL PIVOT DOOR

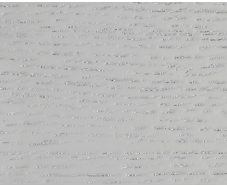


RECESSED WALL FRAME



In the bespoke collection, many types of wood and finishes are possible. The standard collection is available in oak, possibly brushed, stained and lacquered or in a fully lacquered finish. Vonder works with certified high-solid lacquers.

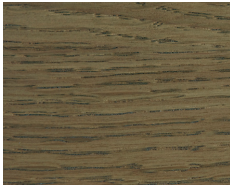
FINISHES IN STANDARD COLLECTION



OAK BRUSHED WHITE



OAK LIGHT



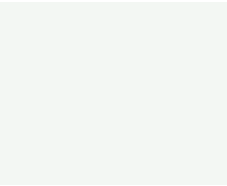
OAK PUTTY



OAK SLATE



OAK DARK



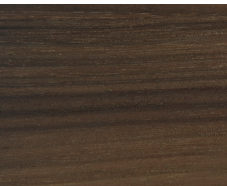
WHITE SEMI GLOSS



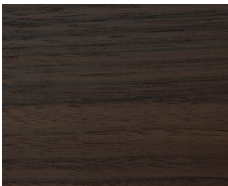
PEARL HIGH GLOSS

FINISHES IN BESPOKE COLLECTION

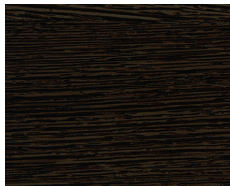
Any other type of finish is possible on request.



WALNUT



DARK WALNUT



WENGE



WENGE BLEACHED



ZEBRANO



ASH





SHOWROOM AND WORKSHOP

Vonderweg 23, 7468 DC Enter PO Box 17, NL - 7468 ZG Enter

+31(0)547 381 818

[info@vonder.nl](mailto:info@vonder.nl)

[www.vonder.nl](http://www.vonder.nl)

For dealers visit our website.

OPENING HOURS

Mon-Fri 10.00-17.00, advice and on Sat by prior appointment.